



Peoples Empowerment Group

ISBM

College of Engineering
Affiliated to Savitribai Phule Pune University
Approved by AICTE – Delhi, DTE – Maharashtra
DTE Code: EN6622



Promoted and Managed
by **IIT-ians**



ISBM
College OF Engineering

ISBM

College of Engineering
Affiliated to Savitribai Phule Pune University
Approved by AICTE – Delhi, DTE – Maharashtra
DTE Code: EN6622

Prospectus 2023

Start with a Dream, Finish with a Future!



ISB&M Ranking

Ranked
30th

Position in India for Placement

Source: Times Engineering
Ranking Survey 2023

Ranked
100th

in Top Private Colleges in India

Source: India Today Best
Colleges Survey 2022

Ranked
128th

in Top Privates Engineering
Colleges in India

Source: Times Engineering
Ranking Survey 2022

Vision

To Empower Efficient and Innovative Technocrats to fit into global competency.

Mission

- ➔ Ensuring state of the art outcome based engineering educational scenario.
- ➔ Fostering a strong industry institute partnership which leads to a lifelong career.
- ➔ Linking students with societal challenges by means of exposure to techno-societal arena.
- ➔ Imparting leadership qualities to aspirants through multidimensional capacity building and soft skills enhancement.

Operating Philosophy

- ➔ To operate with a spirit of Responsibility, Integrity, Professionalism and Partnership.
- ➔ To Think with Speed, Flexibility and an Open Mind.
- ➔ To use a comprehensive understanding of global education to set our own standards.

About

ISBM

College of Engineering

ISBM College of Engineering (Accredited by NAAC grade of B++) has grown rapidly in last few years. It has strong alumni base spread all over the country as well as in different parts of the world. At ISBM College of Engineering, we maintain a high standard of education and continuously strive to create a learning environment in order to promote a great career.

Placement Highlights

Highest Package 12 Lacs

Average Package 5.8 Lacs



Experienced
teaching staff



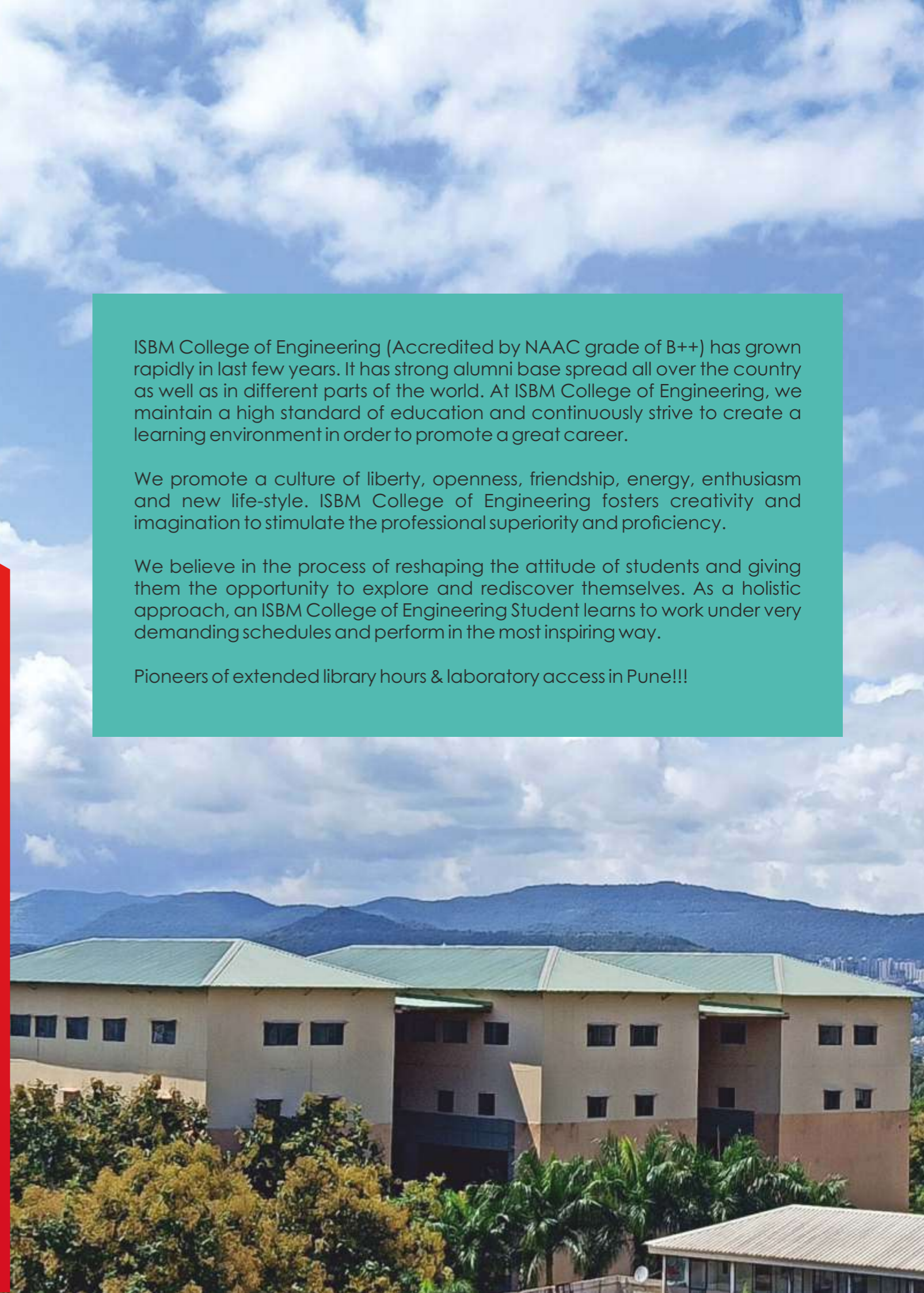
College at the heart of
Pune University

ISBM College of Engineering (Accredited by NAAC grade of B++) has grown rapidly in last few years. It has strong alumni base spread all over the country as well as in different parts of the world. At ISBM College of Engineering, we maintain a high standard of education and continuously strive to create a learning environment in order to promote a great career.

We promote a culture of liberty, openness, friendship, energy, enthusiasm and new life-style. ISBM College of Engineering fosters creativity and imagination to stimulate the professional superiority and proficiency.

We believe in the process of reshaping the attitude of students and giving them the opportunity to explore and rediscover themselves. As a holistic approach, an ISBM College of Engineering Student learns to work under very demanding schedules and perform in the most inspiring way.

Pioneers of extended library hours & laboratory access in Pune!!!



ISBM Group

About ISB&M Pune

Founded in the year 2000 by Dr. Pramod Kumar, ISB&M Nande offers 2 years full-time Career Oriented dual specialization AICTE-PGDM program.



- 2nd Best B- School in Pune
- 3rd Position in Top 20 west Zone B Schools
By Times B-School 2023
- **Highest Salary of 21.56 Lacs &**
- **Average Salary of 10.8 Lacs** for current batch.

80%

**OF OUR STUDENTS
CONTINUE TO
ISB&M PGDM***

*Based on eligible completers
for academic year 2023-25

About ISB&M Bangalore

In this year 2023, ISB&M Bangalore completed 18 years of glorious establishment. The story of ISB&M journey is also one of the sheer determination and grit. ISB&M learning program is driven by high quality faculty & they have been associated with top B-school of India through their education & past work experience.



About ISB&M COC

ISB&M College of Commerce ranked 1st in Pune (Source-GHRDC BBA College Survey 2023) is pioneering college affiliated to Savitribai Phule Pune University offering 3 years full-time UG courses in BBA, BBA (CA) & Media.



About ISB&M Kolkata

ISB&M, Kolkata started in 2004 has over 2000 alumni performing exceedingly well in different parts of country & abroad in senior position in top ranking business organizations. ISB&M riverside campus situated in historical Budge, offers dual specialization AICTE-PGDM.

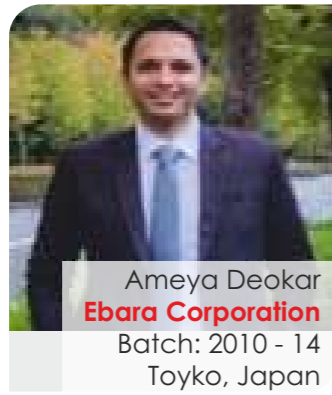


ISB&M has proven record of more than 13 years providing quality education in different streams of management shaping the career of over 1050 alumni.

Global Alumni



Faisal Mohammad
Amazon
Batch: 2010 - 14
Washington, US



Ameya Deokar
Ebara Corporation
Batch: 2010 - 14
Toyko, Japan



Saurabh Sardesai
Mitie
Batch: 2011 - 15
United Kingdom



Harsh Rana
Glaciem Cooling Tech.
Batch: 2011-15
Adelaide, Australia



Gaurang Ambujkar
Naigara Bottling
Batch: 2012 - 16
Los Angeles, US



Mandar Patil
AlWieland Group
Batch: 2012-16
Munich, Germany



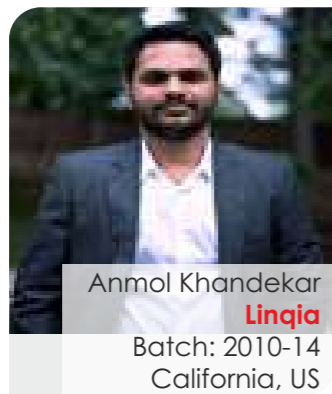
Nikhil Dhumal
Becton Dickinson & Company
Batch: 2012-16
Massachusetts, US



Ajit Gavankar
Testronic
Batch: 2016-20
Warszawa, Poland



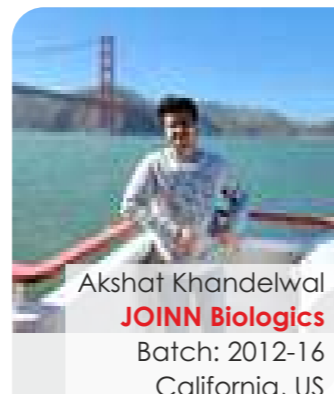
Priyanka Balwadkar
Microsoft
Batch: 2010-14
Washington, US



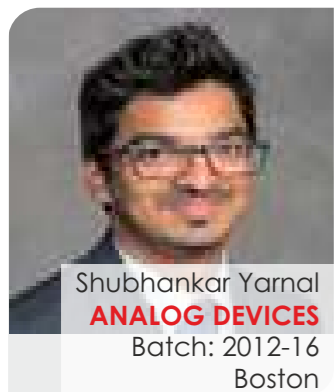
Anmol Khandekar
Linqia
Batch: 2010-14
California, US



Swapnil Belorkar
Blockaviation
Batch: 2012-16
Dublin, Ireland



Akshat Khandelwal
JOINN Biologics
Batch: 2012-16
California, US



Shubhankar Yarnal
ANALOG DEVICES
Batch: 2012-16
Boston



Mohit Sobalkar
Abbott
Batch: 2012-16
Minneapolis

**Global Mobility
in
CAREER
(US, Japan, Australia,
Germany and
Many More...)**

National Alumni



Narayani Thakur
TATA Technologies
SAP Consultant
Batch: 2014
Branch: IT



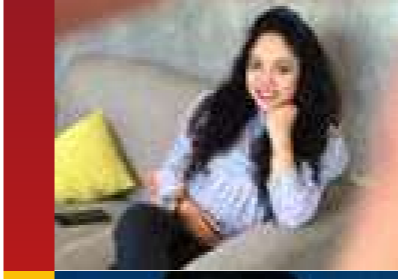
Aniruddha Shelar
Your Digital Lift
Technical Director
Batch: 2014
Branch: IT



Sonali Dhotre
John Deere India
Sr. Software Engineer
Batch: 2014
Branch: IT



Tohid Shaikh
TATA Communications
Executive
Batch: 2014
Branch: IT



Cynthia Ajnavi
Being Addictive
Social Media Manager
Batch: 2015
Branch: IT



Leyon Angre
Capgemini
Senior Consultant
Batch: 2015
Branch: IT



Sarvesh Athawale
PayPal
Sr. Software Engineer
Batch: 2015
Branch: IT



Pragati Kakade
Devonforce
QA Engineer.
Batch: 2015
Branch: IT



Unmesh Nemade
Infosys Ltd.
Technology lead.
Batch: 2015
Branch: IT



Harish Pote
Capgemini
UI Developer
Batch: 2015
Branch: IT



Abhilasha Kumari
VOIS
Deputy Manager
Batch: 2015
Branch: IT



Sunny Dhamale
Smart Card IT Solutions
Quality & Process Ex.
Batch: 2016
Branch: Mechanical



Aishwarya Ranawade
Blazeclan Technology
Senior Cloud Engineer
Batch: 2016
Branch: ENTIC



Prasadhi Soumya
TCS
Business Process Lead
Batch: 2016
Branch: ENTIC

National Alumni



Prasad Bhagat
NICE LTD
Voip Engineer
Batch: 2016
Branch: ENTC



Suyog Jare
Vodafone
Technical Support
Executive
Batch: 2016
Branch: ENTC



Ritesh Bhole
Schaeffler
Senior Executive
product management
Batch: 2016
Branch: Mech



Amol Jagtap
Kirloskar Pneumatic
Sr. Engineer
Batch: 2016
Branch: Mech



Prasad Bagul
Cummins India
Senior Design Engineer
Batch: 2017
Branch: Mechanical



Bharat Munde
Flex
Procurement
Specialist
Batch: 2017
Branch: Mechanical



Vishal Lahishetty
Zeco Aircon
Sr. Technical Sales Er.
Batch: 2018
Branch: Mechanical



Pradeep Shinde
Wolters Kluwer
Devops Engineer
Batch: 2016
Branch: ENTC



Ajosh V Antony
UKB Electronics Pvt. Ltd.
Assistant Manager -
Exports
Batch: 2016
Branch: Mech



Sanjeev Gupta
Accenture
Project Control
Services Analyst
Batch: 2016
Branch: Mech



Sandesh Bade
Absolute Reports®
Sr. Research Associate
Batch: 2017
Branch: Mechanical



Sandip Chitale
L&T Technology Services
Senior Engineer
Batch: 2017
Branch: Mechanical



Tushar Savaratkar
Force Motors Ltd.
Design Engineer
Batch: 2017
Branch: Mechanical



Shantanu Wadekar
Fujitsu
Assi. Tech. Service Er.
Batch: 2018
Branch: Mechanical

National Alumni



Kalpesh Bramhankar
Tata Motors
Purchase Engineer
Batch: 2018
Branch: Mechanical



Supratik Kumar Saha
SalesForce
Support Engineer
Batch: 2019
Branch: Computer



Priti Khadtare
TCS
Business Process lead
Batch: 2019
Branch: Computer



Amruta Pawar
Kirloskar Ebara
Project Manager
Batch: 2019
Branch: Mechanical



Naineeka Singh Thakur
Accenture
Analyst
Batch: 2020
Branch: Mechanical



Asif Ali
Continental
Software Engineer
Batch: 2020
Branch: Computer



Saurabh Gudpalli
Singapore Aero Engine
Sr. Manufacturing
Engineer
Batch: 2020
Branch: Mechanical



Nikhil Borude
Arora Technologies
Sales & Appln Er.
Batch: 2018
Branch: Mechanical



Neeraj Raut
TCS
System Engineer
Batch: 2019
Branch: Computer



Bipin Yadav
Collabera India
DevOps Engineer
Batch: 2019
Branch : Computer



Schone Divekar
IBM
Associate Consultant
Batch: 2019
Branch: Mechanical



Siddaram Chappalgaon
Tata Technologies
Designer
Batch: 2020
Branch: Mechanical



Sanket Ghorpade
AKSH Manufacturing
Quality Engineer
Batch: 2020
Branch: Mechanical



Sonali Rathod
Accenture
Appln Devp. Associate
Batch : 2020
Branch: E&M;TC

National Alumni



Mahua Mukhopadhyay
Atos Syntel
Ass. Consultant
Batch : 2020
Branch: Computer



Dattatray Magar
TCS
Assi. System Engineer
Batch: 2020
Branch: Computer



Aman Choubey
Publicis Sapient
Associate Technology
Batch: 2021
Branch: Computer



Chetan Patil
Accenture
Associate Software Er.
Batch: 2021
Branch: Computer



Ashwini Joshi
Infosys
System Engineer
Batch: 2021
Branch: Computer



Santosh lohar
Indoco Remedies
Technician
Batch: 2021
Branch: Mechanical



Ashutosh Shinde
Infosys
System Engineer
Batch: 2021
Branch: Mechanical



Komal Mishra
Capgemini
Sr. Software Engineer
Batch: 2020
Branch: Computer



Pratiksha Mali
Seance Inc
Analyst
Batch: 2021
Branch: E&TC



Prashant Rana
Mindtree
Software Engineer
Batch: 2021
Branch: Computer



Komal Detake
Tata Communications
Associate Engineer
Batch: 2021
Branch: Computer



Milind Nemade
Mindtree
Technical specialist
Batch : 2021
Branch: Computer



Shrinivas Gundale
Tech Mahindra
Design Engineer
Batch: 2021
Branch: Mechanical



Toseeb Nadaf
VerveTronics
Full Stack Engineer
Batch: 2022
Branch: E&TC

National Alumni



Sufiyan Khan
Tata Consulting
Associate Design Er.
Batch : 2022
Branch : Mechanical



Asir Shaikh
Finastra
Associate Software Er.
Batch: 2022
Branch: Computer



Aditi Shimple
A.P. Moller - Maersk
Software Engineer Intern
Batch :2022
Branch: Computer



Akhilesh Joshi
Tata Elxsi
Engineer
Batch: 2022
Branch: Computer



Vaibhav Dhame
TATA Consulting
Design Engineer
Batch: 2022
Branch: Mechanical



Akash Masutage
GE
Engineering Apprentice
Batch: 2022
Branch: Mechanical



Sagar Taware
CEAT Ltd.
Design Engineer
Batch: 2023
Branch: Mechanical



Abhijit Sanas
Emerson Innovation
Lead Engineer Product
Design
Batch: 2022
Branch: Mechanical



Mandar Dixit
Infosys
System Engineer
Batch: 2022
Branch: Computer



Saurabh Dahibhate
Vibeosys
Digital Marketing Intern
Batch: 2022
Branch: Computer



Shrikant Bhandare
Ergobite
Developer Trainee
Batch: 2022
Branch: Computer



Swapnil Manorkar
Speed Solutions
Design Engineer
Batch: 2022
Branch: Mechanical



Karishma Inamdar
GE Aerospace
Jr. Quality Engineer
Batch: 2022
Branch: Mechanical



Amar Dalavi
TATA Tech. Ltd.
Sr. Engineer
Batch: 2023
Branch: Mechanical

Course Intake

Accreditations :

Approved by **AICTE** F. No. West/1-4351941/2010/New

Recognized by **Maharashtra State Government** 2010(165/2010) Tanshi-4

Approved by **Directorate of Technical Education (DTE)** En6622, Mumbai

Affiliated to **Savitribai Phule University** ID No. PU/PN/Engg.401 (2010)

Programs offered by ISBM College of Engineering, Pune :

Bachelor of Engineering (B.E) Degree Programs :

- Computer Engineering(662224510) : Intake 150
- Artificial Intelligence & Machine Learning(662292110) : Intake 60
- Artificial Intelligence & Data Science : Intake 60 (662299510)
- Mechanical Engineering(662261210) : Intake 60
- Electronics & Telecommunication Engineering(662237210) : Intake 30

Additional Certificate Courses (Make design for below points like) :

- Robotics & Intelligent Technologies
- Product Design
- Media Technology with Gaming & Animation
- Biomedical Technology & Devices
- Block Chain Technology

Why Engineering ?

85% Placement ratio

90% To Gaining integrated technical skill

77% To improve research skill

65% To Enhance entrepreneurship skills

Why ISBM College of Engineering ?



Graduation with value addition



Project Based Learning



Campus Placement & Global Career Opportunities



Live Projects



MOUs with MNC's

Department of Applied Science

The globalization and modernization in the world demands 'interdisciplinary approach' and therefore it is important that one possess minimum basic knowledge of several disciplines. Department of first year engineering is taking more focused and multidimensional efforts to make the 'foundation' of the students as strong as possible. The department has well equipped laboratories for F.E. students. A student of any discipline of engineering needs a good understanding of mathematics and basic sciences and that is taken care by our applied science faculty members.

Engineering Science Labs

- Basic Civil and Environment Engineering Lab
- Basic Electrical Engineering Lab
- Basic Electronics Engineering Lab
- Basic Mechanical Engineering Lab
- Engineering Chemistry Lab
- Engineering Mechanics Lab
- Engineering Physics Lab



Amruta Pawar
Branch: Mechanical
Kirloskar Ebara Pumps
Batch: 2016-20



I am proud of my college where I learned not only about curriculum but also about personality development skills through various workshops. College arranges various events throughout the year from which I have learned plenty of things. Our teachers are best. They teach us with full efforts and they ensure that every student understood the concept ISBM helped the students before and during the placement season by providing training for Aptitude, Communication, and Technical aspects to make sure they are ready for the placement. They support the students like a back bone in academics as well as in extracurricular activities.

Department of Computer Engineering

Computer technology has become an integral part of our daily life. It is the most important element in the education of students of the present and the future era. Computer Technology has revolutionized society to a great extent. Technological advancements are so rapid in this field that continual learning is essential to keep the skill set of students up to date. Expertise in computing is a skill essential not only for the computer engineering students, but also for the students of other branches of engineering. Our students become competent computer engineers imbued with the spirit of professionalism & responsible citizenship.

Intake: 150
Course Pattern:
Semester (2019 Pattern - as per SPPU)
Choice Based Credit System

The curriculum puts an emphasis on information management, information storage, information communication and presentation. The teaching and learning process emphasizes equally on theoretical and practical aspects catering to the needs of industries.

ISBM COE has a good combination of qualified teaching and non-teaching staff to excel in teaching learning process with latest computer hardware and networking facilities. Further, a dedicated 32 Mbps IP leased line with backup of another 512 kbps leased line is available. Subscribe for the microsoft academic alliance provides the Windows OS platform and software. Adequate peripherals are provided along with a back-up UPS and DG set to provide uninterrupted computing capability.

Placement Ratio (Computer)

Software Developer / Computer Programmer	28
Database Administrator	8
Hardware Engineer	6
Data Analyst	12
Web Developer	15
Information Security Analyst	8
System Manager	9
IT Support	14

Department of Artificial Intelligence & Machine Learning

Artificial Intelligence and Machine Learning are much trending terms nowadays. Machine Learning (ML) is a subset of Artificial Intelligence and it is a science of designing and applying algorithms that are able to learn things from past cases. If some behaviour exists in past, then you may predict if or it can happen again. Means if there are no past cases then there is no prediction.

Intake: 60
Course Pattern:
Semester (2019 Pattern - as per SPPU)
Choice Based Credit System

ML can be applied to solve tough issues like credit card fraud detection, enable self-driving cars and face detection and recognition. ML uses complex algorithms that constantly iterate over large data sets, analyzing the patterns in data and facilitating machines to respond different situations for which they have not been explicitly programmed. The machines learn from the history to produce reliable results. The ML algorithms use Computer Science and Statistics to predict rational outputs.

Major Components Of Ai & ML are:

- Cognitive Abilities
- Database
- Hardware
- Framework
- Application Program Interfaces (APIs)



Asif Ali
Branch : Computer
TCS



My days at ISBM College of Engineering reminds me of the colourful stage, the vibrant classrooms and the super supportive faculty. The blend of classroom, extracurricular, cultural and social activities are very helpful to mould students as unique individuals. The College enhanced the creativity in me and made me realize my hidden talent of coding. At present, I am working with TCS. I am Grateful that I had this College as the stepping stone of my career life.

Department of Artificial Intelligence & Data Science

Data Science is an interdisciplinary field with the ability to extract knowledge/insights from data - be it structured, unstructured, or semi-structured data. Twinned with Artificial Intelligence, more efficient solutions to find meaningful information from huge pools of data are possible today, with data from multiple sources - sensors, images, streaming video, satellite, medical imagery and the cloud.

Intake: 60
Course Pattern:
Semester (2019 Pattern - as per SPPU)
Choice Based Credit System

This graduate program has a comprehensive coverage of applied mathematics used in data science and artificial intelligence while preparing the students to analyze, design and experiment solutions to problems. The curriculum targets technical and design skills, AI knowledge, and competencies needed to master strategic analytical methods and tools, and data management, with the objective of creating innovative strategies to solve challenging real-world problems.

Artificial Intelligence & Data Science Labs

- ➔ Data Structure and Analytics Lab.
- ➔ Object Oriented Programming Lab.
- ➔ Data Visualization Lab.
- ➔ Natural Language Processing Lab.



KOMAL MISHRA
Branch: Computer
Capgemini

“

ISBM College of engineering has always supported and encouraged me towards innovation and development of personality in each and every perspective. Play a part and organizing events, volunteering, working on different projects beyond the given syllabus, being the member of the fest committee, are some of the highlights of my college days. The honoured faculties at the computer department are helpful and kind.

Department of Electronics & Telecommunication

The department of Electronics and Telecommunications at ISBM College of Engineering offers state-of-the-art infrastructure and resources in terms of knowledgeable faculty, well equipped laboratories and a library with a variety of reference books, technical journals, department has faculty working in the cutting edge technology areas including signal processing and mobile communications, VLSI, embedded systems, power electronics, electronic devices, that are vital to living in today's modern society. Students are encouraged to work on extra projects to gain better understand and develop interest in the subject. The faculty research and student curriculum is well supported through various labs.

Intake: 30
Course Pattern:
Semester (2019 Pattern - as per SPPU)
Choice Based Credit System

The department does host a vibrant branch of The Institute of Electrical and Electronics Engineers (IEEE) students Chapter which ensures the technical and social up gradation of students through networking with peers and other excellent opportunities like field trips and trainings.

Electronics and Telecommunication Labs

- ➔ Audio-video Engineering Lab
- ➔ Analog Electronics Lab
- ➔ Communication Lab
- ➔ Data Structure & Algorithm Lab
- ➔ Digital Signal Processing Lab
- ➔ Digital Electronics Lab
- ➔ Electrical Technology Lab
- ➔ Vlsi Lab
- ➔ Hardware Lab
- ➔ Microprocessor Lab
- ➔ Network And Power Lab
- ➔ Optical Fiber Communication Lab
- ➔ Project Lab
- ➔ Simulation Lab
- ➔ Telecommunication Switching System Lab



Nitin Godse
Branch: Mechanical
African Industries Group

“

My graduation at ISBM College of Engineering has been a very interesting and awesome journey. At this college I gain friendship and unforgettable memories which added a different perspective to my life. It feels great to be taught by amazing teachers who are the best. They always motivated and encouraged me to face any risk and learn new things. I am and will always be thankful to ISB&M for making me a person who I am today.

Department of Mechanical Engineering

The department of Mechanical Engineering at the ISBM College of Engineering is one of the core and evergreen branch in engineering and pioneering department in ISBM COE, Pune. The mechanical engineering workshop is one of the most attractive workshops in the country with truncated inverted pyramidal shape and a glass wall construction. The workshop houses a machine shop, welding shop, fitting shop and carpentry shop.

Intake: 60
Course Pattern:
Semester (2019 Pattern - as per SPPU)
Choice Based Credit System

As assorted variety of static and sorting models are available for students to grasp the basics of various concepts in thermodynamics and kinematics, elements of machine design and the construction of equipment used in heat engineering.

Department of mechanical engineering takes pride in flaunting the plethora of opportunities extended to its students through the students chapter of The American Society of Heating, Refrigerating and Air Conditioning Engineers (ASHRAE) which counts on helping the students in delivering the excellence through mingling with Industrial stalwarts.



Abhishek Taware
Branch: Mechanical
Valvo Eicher

“

ISBM COE helped me to learn the latest technologies that were in demand in the current industry. Experts guide us to work with real-life problems. The professors here make the university what it is today. The students getting placed in different industries is giving us a great opportunity to build our career further. There are various cells that allowed me the opportunity to connect with the peoples.

ISBM

**Learn to Strive
& Compete with Best!!**

**your Journey
to the
Tech Space**

President's Message :



Dr. Pramod Kumar
Group President
Ph.D. (OB), IIT Mumbai

- Formerly with IIM Ahmedabad,
- Former Chairperson Placement, XLRI, Jamshedpur,
- Ex-Director, Symbiosis Institute of Business Management, Pune;
- Consultant to over 80 companies worldwide, Author of over 100 research papers, cases and management games,
- Research quoted internationally in textbooks and journals. Served on Government of India Committees on Management Education.

Decisive Moments and Actions Shape Your Education at ISB&M

Such moments also signify that you are inclined and ready to assume business leadership role within an ever growing, ever-changing world.

We are a community defined by three core qualities.

We inspire and share success: Transformation and passionate performance are all about an inner drive to win. Success comes from creating the new direction in life and instilling values that support your aspiration to succeed. It is no wishful thinking. At ISB&M, we work together to create a leadership profile and career. We shape your capabilities and transform your skills, making you the most in-demand candidate.

We think fearlessly: By blending bold creativity with rational & rigorous analytics, our students and alumni generate great career & business ideas. Our faculty and students provoke new thinking and experimentation with bold ideas. We encourage them to shed anxiety of future & paranoid thoughts.

We drive total transformation: We are impatient unless we can measure our efforts against tangible impact.

Whether seeking a summer internship or permanent employment, our students fan out across industries. From IT giants to investment banking to consumer electronics or to FMCG, our students and alumni are transforming the world around them with the values and aspiration that liberal ISB&M culture inculcates. Several top rated companies look forward to recruiting ISB&M students as interns and also for final recruitment. ISB&M is a preferred brand also for lateral hiring at later stages of career. In career building, you find ISB&M alumni all across the globe with largest numbers in USA, UK, Singapore, and Dubai. Several of them pursue fancy life-style.

Campus & Culture

Our vibrant residential campus is designed to develop skills, attitude of endurance, independence, rational choice that build relationships & friendships that last a lifetime.

Look forward to a career that makes an impact & a life of your choice.

Principal's Message :



Dr. Pankaj Srivastava
Ph.D. (E&TC), from Govt. College, S.G.G.S. Nanded
M.Tech.(Microwave) from Government College of Engineering Pune

- Life Member of ISTE
- Worked as Head of Department for more than 27 yrs in Engg. College.
- Has Served as a Research Coordinator & IEEE Branch Counsellor.
- He has been instrumental in S.P. Pune University's prestigious Research & Innovation Council, "AVISHKAR".
- Currently guiding 3 Ph.D. students as a Ph.D. Guide under SPPU.
- He has published several research papers in National & International Conferences/ Journals, Authored Book for Technical Competitive Examinations and has patents to his credit.

Greetings of the season and welcome to ISBM College of Engineering (ISBM COE) Accredited by NAAC with B++ grade. The Institute is established to shape world-class technical professionals and leaders to create an inclusive and sustainable society in a national and international perspective. To achieve this we have undergraduate engineering degree programs that allow students to fully develop their professional abilities and skills to face the ever changing social, economic and technical landscape of world.

Indian youth have an unprecedented opportunity before them. For the empowerment of Indian youth, we are aiming to foster an environment where students can teach themselves through trial and error. Project-based learning, personalized and blended learning, and competency-based learning. Dedicated and excellent faculty, state-of-the-art infrastructure and laboratories are the areas where we are distinct. Research is an integral part of this institute which not only endeavors to enrich academic of our stakeholders, but also provides an environment to explore and discover their true potential. The holistic approach of the institute had stimulated innovation among students by inspiring fresh ideas with different perspectives, creative thinking, and strong conviction to achieve true success. To accomplish this, we have a very strong Industry-Institute Partnership with functioning MOU's to cater the diversified needs of practical blended education and Industrial Exposure. Strategically we find it of utmost important to promote more and more students for foreign education at master's level.

I invite you for campus visit to know more about our programs, research & variety of exciting activities in various departments.

Core Faculty

Applied Science

Prof. Krishna Kr. Yadav

*M.tech, MANIT, Bhopal
B.Tech, UCER, Allahabad*

12 years of experience academic & industry. Worked with United Drilling company Delhi NCR as Design engineer. Worked as Assistant Professor with KCNIT Banda , NIET Noida, Shri SVU University, Amroha published research papers in National & International journal and conference of repute and indexed with Scopus.

Dr. M. P. Yadav

*Ph. D. (Physics), Central University, Allahabad
M.Sc. Physics (Digital and Communication Electronics), Dr. Ram Manohar Lohia University, Ayodhya.*

Over two decades, years of experience in academics. Author of many articles in Magazines, more than 18 National and International Research Papers. Guide of Ph. D. students in fields of Electronics and Physics. Published 3 books in Physics and more than 4 books for Self Learning materials. Anchored and Conducted a Technical Show on All India Radio.

Dr. Renuka Saraogi

*HOD (Department of Applied Sciences)
Ph. D. (Cosmology), SGB University, Amravati
M. Sc. (Mathematics), SGB University, Amravati*

8 years of overall experience in academics with 2 years of Post Ph. D. experience. Presented and Published Research Papers in various National and International Conferences. Published papers in different International Peer Reviewed Journals. Organizing member of various International Conferences.

Dr. Deepak Kulshreshtha

*Ph. D. (Physics), Dr. Bhim Rao Ambedkar University, Agra
M. Sc. (Physics, Electronics), Dr. Bhim Rao Ambedkar University, Agra*

Over 17 years of experience in academics with multiple research publications in International Peer Reviewed Journals. Presented papers in various National & International Conferences across the country.

Dr. Suman Mishra

*Ph.D. (English), Rajasthan University
PG (English) Allhabad University, PG (English) UP University, UG (English) University of Allhabad*

A strong academic background of 16 years. Worked as Assistant Art Director for Bollywood, on UNICEF projects for the upliftment for Children, as Team leader on visits to J&K central university and the ministry of youth affairs (Government of India). Appreciated by the Vice Chancellor for the commitment towards students welfare 2015. Published numerous papers in international journals and attended various national and international conferences.

Prof. Archana Prayag

M. E. (Civil Environmental Engg.), Anantrao Pawar College of Engineering & Research, Pune

10 years of academic and 10 years of Industrial experience in constructions of residential, commercial projects. Multiple International Publications in Peer Reviewed Journals. Organizer of international and national conferences. Life Member of ISRTE.

Prof. Pravin Chavan

*M.Sc. (Organic Chemistry), Annasaheb Magar College, Pune
B. Ed., Dhareshwar College of Education, Pune CTET*

12 years of academic experience. Mentored and guided students for various competitive exams. Paper Setter for MSBTE. Participated in various National Conferences.

Prof. Navnath Lakde

*M. Sc. (Mathematics), Dr. BabaSaheb Ambedkar Marathwada University, Aurangabad.
NET Qualified*

2 years of academic experience. Attended several National and International Conferences and presented papers in them.

Prof. Renuka Salunke

*ME (Power Electronics & Drives) AISSMS's IOIT, Pune.
BE (Electrical Engineering), JSPM COE, Pune*

7 years of academic experience with multiple research paper publications in reputed peer reviewed international journals. Attended training programs and workshops on various topics in the field.

Core Faculty

Applied Science

Prof. Dhanashree Vedpathak

*M. Sc. (Industrial Maths with Computer Application) ,
B.Sc. (Mathematics)*

She is having 1.5 year of teaching experience in engineering college.

Prof. Vijay Agatrao Galande

M. Sc. (Mathematics)

He is having 13 year of teaching experience in engineering college.

Dr. Neelam Rani

*Ph.D. (Plasma Physics), J. C. Bose University of sciences & Technology, YMCA, Faridabad.
M. Phil. (Fiber Optics), C.D. L. University, Sirsa.
M.Sc. (Physics) Guru Jambheshwar University of sciences & Technology, Hisar.*

She is having 15 year of teaching experience in engineering college.

Prof. Ashok Kumar

M. Tech (Power System), MBU University, H.P.

He is having 23 year of teaching experience in engineering college.

Prof. Vaishali Pandurang Joshi

PhD(Transportation Engineering)
M.E. (Construction & Management)
B.E. (Civil Engineering)*

She is having 9 year of teaching experience in engineering college.

Prof. Ashwini Arvind Musale

Msc (Organic chemistry)

She is having 1 year of teaching experience in engineering college.

Mechanical Engineering

Prof. Vaibhav Edake

Ph.D. (Pursuing)SJJT University, ME(Design Engineering) Savitribai Phule Pune University, MBA (Operation Management)Savitribai Phule Pune University

2 year of Industrial Experience and 10 years of teaching Experience, 10 Journal paper published, Expertise in Design and Analysis of Component.

Dr. P.K.De

Ph.D. (IIT Kharagpur), Post-doc scholar in Denmark and Germany, M.E. (Gold Medalist

Former Dean (Academics), XLRI Jamshedpur; Ex-Professor at S.P. Jain Inst. of Management & Research. Awarded the "Best Teacher Award" by Association of Indian Management Schools (AIMS) in 1999. Worked with Tata Motors, Maruti Udyog, ISRO and Braithwaite & Company. Visiting Professor at University of Bielefeld, Germany. A corporate consultant.

Prof. Chandrakant Khemkar

*ME (Design Engineering) Savitribai Phule Pune University
BE (Mechanical Engineering) Shivaji University*

3 years Industrial experience in Design and Development, 10 years of Teaching Experience. 8 Journal Paper published. Expertise in Design of Machine and Mechanism.

Prof. Tushar Edake

*ME (Design Engineering)
Savitribai Phule Pune University,
BE (Mechanical Engineering)
Savitribai Phule Pune University.*

1 year Experience in industry. Published 4 journal Paper. Expertise in Design Modeling and Analysis.

Core Faculty

Mechanical Engineering

Prof. Niteen Bahiram

*M.Tech (CAD/CAM)
NIT Surat
B.E (Mechanical Engineering), Pune University*

2 years of Academic Experience. Expertise in Design and Simulation.

Prof.Puspendra Upadhay

*Master of Engineering (ME),
BE (Mechanical Engineering)*

0.6 years of industrial experience and 7 years of Academic Experience, Expertise in Heat Power

Prof. Ravi Suryawanshi

*Master Of Engineering (ME),
Beachlor Of Engineering (BE)*

1.6 years of industrial experience and 6 years of Academic Experience, Expertise in Heat Power , Thermal Engineering.

Prof. Nilesh Dhobale

*M.Tech in Mechatronics VIT, Tamilnadu,
BE Mechanical Engineering,(SPPU)*

3 years of Academic Experience, Expertise in Mechatronics, Robotics , Condition monitoring using AI

Prof. Ritesh Rakhonde

M.E. (Industrial Design) IIT, Delhi

Having more than 8 years of experience in creating user-centric product , His expertise lies in enhancing the user research , heuristic evaluations, IA, usability testing.

Mr. N. T. Rathod

Workshop Instructor

Mr. Sagar D. Rathod

Assistant to Instructor

Electronics and Telecommunication

DR. P. K. Srivastava

Principal & Professor
*Ph.D. (E&TC), Govt. College, S.G.G.S. Nanded.
M.Tech.(Microwave), Government College of Engineering, Pune (COEP).*

Over 22 years of Teaching & Research experience. Life Time Member of ISTE, Head of Department in different Engineering. Colleges, Executive Member and IEEE Branch Counsellor, Research Coordinator at PVPIT, Bavdhan Pune & approved Ph.D. Guide in Pune University, Member of Research Committee at "Savitribai Phule Pune University" i.e. Avishkar constituted by Vice Chancellor, Author of several research papers in National & International Conferences/ Journals, Authored Book for Technical Competitive Examinations

Successfully filed Patents :

- 1] "In Indian Woman Intelligent Safety Device Using Machine Learning".
- 2] "Aeroplane ,Aircraft Accidents Predictive Analytics Using Machine Learning, Deep Learning And Other Programming".
- 3] "Material Identification of Multiple Objects with a 24GHz Band Radar Module".

Prof. Sitaram Longani

*Ph.D.*Maharshi University Lucknow, U.P.
M.Tech.(Communication Networks) Sinhgad College of Engineering, Pune*

Over 7 years of teaching experience. He is University 3rd ranker in ME. IEEE Associate Member. Best Research Paper awarded in National Conference. Area of interest: Microcontroller, Microprocessor

Prof. Pratibha Patil

*ME-Signal Processing,
B.E. (E&TC)*

9 Years of teaching experience in engineering college.

Core Faculty

Electronics and Telecommunication

Prof. Pooja Kolhe

*M.E.(VLSI and Embedded systems),
B.E.(Electronics)*

She is having 4 years of teaching experience in engineering college.

Prof. Neha Singh

*M. Tech (Power System)
RGPV university Bhopal MP.*

She is having 7 years of teaching experience in engineering college.

Prof. Gitanjali Ligade

*ME. (VLSI & Embedded System)
Bharati Vidyapeeth College of Engineering for Womens*

4.5 Years company experience and 1 year Teaching experience.

Computer Engineering, Artificial Intelligence in Data Science & Machine Learning

Prof. Balasaheb Gite

Ph.D. (CSE) (Pursuing), M.E. (CSE), W.C.E. Sangli, B.E. (CE)

Total academic experience of 22 years. He has published 25 Research paper
Areas of specialization : Database and Network Security, Data Mining, Information Security.

Prof. Anil V. Walke

ME E&TC (PICT Pune)

He is having 26 years of teaching experience in engineering college.

Prof. Kirti Shriram Randhe

*M. E. (Computer Engineering), SPPU Pune
B.E (Computer Engineering), HVPM Amravati*

Total academic experience of 7 years. She has published many papers in Conferences and Scopus Indexed Journals and filed 1 Patent.
Areas of specialization : Database and Network Security, Data Mining, Information Security.

Prof. Dharamveer Singh Sisodiya

*M. Tech. (CSE)
From SR Group of Institution, Jhansi (UP)*

He is having 12 years of teaching experience in engineering college. Published 1 research papers in national journals.
Area of Specialization : Database management system

Prof. Nikhil Kumthekar

MCA From SPPU University, Pune

He is having 4 years of teaching experience in engineering college.

Prof. Reshma Sonar

Ph.D. (Computer Engineering),
M.Tech(IT), B.E.(CSE)*

She is having 19 year of teaching experience in engineering college. Published 16 research papers in international journals.

Prof. Darshana Bhambare

*M.E. (Computer Engineering)
B.E. (Computer Engineering)*

She is having 9.5 year of teaching experience in engineering college. Published 1 reasearch paper in international journal of advances inengineering & applied science

Prof. Dipali Deshmukh

*M.E. (Computer Engineering)
B.E. (Information Technology)*

She is having 5 year of teaching experience in engineering college. Published 1 reasearch paper in national journal and 1 in international journal.

Core Faculty

Computer Engineering, Artificial Intelligence in Data Science & Machine Learning

Prof. Kailash Nath Tripathi

*Ph.D. (Pursuing),
M. Tech (CSE), B. Tech (CSE)*

He is having 17 year of teaching experience in engineering college.

Prof. Sujata Jogdand

*MBA in BA (Pursuing),
M. Tech (E&TC),
B. Tech (E&TC)*

She is having 9 year of teaching experience in engineering college.

Prof. Manisha Salunkhe

BE (CSE)

She is having 2.5 year of teaching experience in engineering college.

Prof. Chandan. S. Wagh

M. Tech (IT), BE (CE)

He is having 16 year of teaching experience in engineering college.

Dr. Vilas. R. Joshi

*Ph.D. (5G Technology),
BE (E&TC)*

He is having 18 year of teaching experience in engineering college.

Prof. Soni K. Kendre

M.Tech (CSE), B.E. (CE)

She is having 1 year of teaching experience in engineering college.

Prof. Parinita Walivadekar

M. E. (Digital Systems)

She is having 8 years of teaching experience in engineering college.

Prof. Prajкта A. Puranik

ME(CS) From UVCE COE, Bangalore University

She is having 9 years of teaching experience in engineering college.

Prof. Vidya Kadam

ME (VLSI & Embedded System) Pune University

She is having 9 years of teaching experience in engineering college.

Prof. Sharda. S. Thete

B.E. (CE)

She is having 5 years of teaching experience in engineering college.

Mr. Prabhakar. A. Mane

B.E. (CE)

She is having 5 years of teaching experience in engineering college.



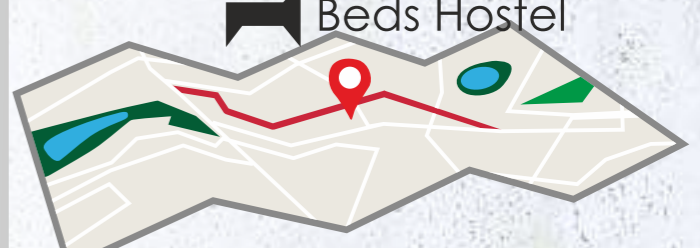
Dedicated **Student Opportunities Team** to help you get the most out of **student life** in **ISBM COE**

Vibrant
Night Life

ISBM COE
Never Sleep

21 ISB&M
Students
Creative
Cells

 **3** **cafés on campus**

+ acres campus
13 and **600+**
1 Beds Hostel




Sanmay Devale
Mechanical Engineering
DELOITTE CONSULTING
Batch: 2014-18
PGDM (SCOM): 2020-22

“

I am very grateful for the numerous Contributions of ISB&M in support of my education. Without ISB&M's help, I may never have been able to complete my studies. The generosity and help have been an inspiration to me. Again, thank you for your encouragement.

Different Committees & Cells for complete Transformation of Students

A. Internal Quality Assurance Cell (IQAC) :

- To develop a system for conscious, consistent and catalytic action to improve the academic and administrative performance of the institution.
- To promote measures for institutional functioning towards quality enhancement through internalization of quality culture and institutionalization of best practices.

Functions of IQAC

- A. Development and application of quality benchmarks / parameters for various academic and administrative activities of the institution
- B. Facilitating the creation of a learner-centric environment conducive to quality education and faculty maturation to adopt the required knowledge and technology for participatory teaching and learning process
- C. Arrangement for feedback response from students, parents and other stakeholders on quality-related institutional processes.
- D. Dissemination of information on various quality parameters of higher education
- E. Documentation of the various programs/activities leading to quality improvement
- F. Acting as a nodal agency of the Institution for coordinating quality-related activities, including adoption and dissemination of best practices
- G. Development and maintenance of institutional database for enhancing the institutional quality
- H. Development of Quality Culture in the institution

B. Research and Development Cell

Objectives of the Research and Development Cell :

- To evolve policy framework to regulate the interdisciplinary and multidisciplinary Research undertaken in the University
- To promote and implement Research & Development Program
- To encourage core competence & consultancy in Research
- To provide infrastructural facilities to encourage Institute & Industry interaction for pioneering relation on interaction for pioneering research in field of built environment & fine arts



The Placement Assistance Cell (PAC) is a small group of teachers and students working together to enable the deserving students of the institution to get competitive placements. Along with providing placements, the cell also provides training to the students to improve their aptitude, soft skills and technical skills and enabling them to become trainable and employable candidates for campus recruitment program. The students are trained in soft skills by the best teachers of ISB&M B-School, helping them to learn the ethics and etiquettes of the corporate world along with their technical skills.

The Placement Assistance Cell of ISB&M School of Technology breaks the conventional methodology of the placement cells of other engineering colleges by involving the students in the placement program equally with teachers, thus giving the students an exposure to the corporate world. The vision of PAC is to provide good work environment for the young minds of our institution. The mission of this cell is to make all possible effort to place all the students. The PAC is taking this opportunity to invite companies/organizations for the recruitment of students this year. We are confident that our institution candidates will meet the requirements of corporate world in every field of knowledge

C. Entrepreneur Development Cell

Objectives of EDC :

- To act as an institutional mechanism for providing various services including information to building student entrepreneurs
- To foster better linkages between the Institution, Industries and R&D institutions in the region and other related organizations engaged in promoting Small & Medium Enterprises (SMEs) including NGOs and other Voluntary Organizations
- To catalyze and promote Development of Enterprises and promote employment opportunities
- To respond effectively to the emerging challenges and opportunities both at national and international level relating to SMEs and Micro Enterprises

Functions of EDC

- To organize Entrepreneurship Awareness Camps, Entrepreneurship Development Program and Faculty Development Program
- To conduct research work and survey for identifying entrepreneurial opportunities
- To guide and assist prospective entrepreneurs on various aspects such as preparing project reports, obtaining project approvals, loans and facilities from agencies of support systems and information on various technologies
- To organize guest lectures, TV & Radio talks, Seminars, etc. for promotion and growth of entrepreneurship
- To arrange visits to industries for prospective entrepreneurs
- To extend necessary guidance and escort services to the trainees in obtaining approval and execution of their projects
- To act as a Regional Information Centre on business opportunities, processes, technologies, market, etc. by creating and maintaining relevant databases.
- To provide testing, calibration, quality assurance, design, tool room, pilot plant and other facilities for Entrepreneurs besides expertise in Intellectual Property rights, Patents search, etc
- To conduct skill development training program leading to self/wage employment

D. Placement Assistance Cell

- Placement Cell provide guidance to the students for selecting right career
- To give knowledge, improve skill with aptitude test.
- Gathering information about job fairs and all relevant recruitment advertisements.
- Organizing pre-placement training/workshops/seminars for students.
- To act as a bridge between students, alumni and the employment community.

Our Recruiters



Collaborative Learning

- Collaborative Learning, sometimes called small-group learning, is an instructional strategy in which small groups of students work together on a common task. In some cases, each group member is individually accountable for part of the task; in other cases, group members work together without formal role assignments.
- Collaborative learning changes students' and teachers' roles in classrooms. The ownership of teaching and learning is shared by groups of students, and is no longer the sole responsibility of the teacher. The authority of setting goals, assessing learning, and facilitating learning is shared by all. Students have more opportunities to actively participate in their learning, question and challenge each other, share and discuss their ideas, and internalize their learning. Along with improving academic learning, Collaborative learning helps students engage in thoughtful discourse and examine different perspectives, and it has been proven to increase students' self-esteem, motivation, and empathy.
- Some challenges of using Collaborative learning include releasing the control of learning, managing noise levels, resolving conflicts, and assessing student learning. Carefully structured activities can help students learn the skills to work together successfully, and structured discussion and reflection on group process can help avoid some problems.

Infrastructure



Classrooms

State of the art classroom facilities and an adequate number of tutorial rooms available. Both whiteboards and projectors are available.



Library

The institute has a modern library where students and faculty have access to textbooks. CD's National & International journals, periodicals, newspapers and e-journals.

A supplementary digital library facility is also available on the internet. We also provide access to information products online and a wide range of professional standards. Other than 7000 text books and reference books along with journals, which are backbones of our library.



Innovation Centre

College has recently started a full fledged innovation center where faculties & students can employ the research skill like embedded, IoT, Mechatronics to address socio-technological issues.



Hostel

The college hostel is located in the college campus, and has a capacity of 500 students. It has well furnished rooms, each with a table, a chair, a cupboard, a fan, 24 hours security, generator backup, purified drinking water, and hot water facility through solar heating. The hostel has a safe, peaceful and disciplined environment. For students' convenience, we have also included a reading hall, for students who would like to study extra hours. Our campus also includes indoor and outdoor sports facilities to help students maintain a healthy lifestyle.



Auditorium

We have a well-equipped multi-facility auditorium. A host of events ranging from conferences, workshops and seminars to culture functions and indoor sporting events are held here.



Digital Library

The state-of-the-art digital library is equipped with JGET, IEEE, ASTM packages offering over 9500 national and international journals.



Language Lab

The college has well developed Language lab for enhancing student's vocabulary soft skills.



Seminar Hall

A big seminar hall is available for hosting conference sessions, presentations and guest lectures. It is also a venue for career development programs and various institute activities.

Canteen & Cafeteria

A variety of hygienic and nutritious food items are available in the ISB&M canteen. The canteen provides onsite dining, food and beverage vending, a relaxed ambience and follows highest standards for food quality. We provide various cuisines ranging from Indian, Chinese, South Indian, sandwiches and many options for drinks like fresh fruit juices, cold drinks, coffee and tea that are sure to take care of all our students' requirements and preferences.

Bank

Axis Bank ATM center is available at walking distance.

Medical Emergency

Health of our students is our top priority, and medical attention cannot be ignored. In case of emergencies, we have a doctor in the campus at all hours who can address such unfortunate situations immediately. We also have facilities to rush our students to hospitals for immediate care.

Guest House

Guest house, which is primarily meant for the guests of the institute. Rooms are available for the guests of the institute, including Alumni & Parents of the students.



Student Buzz

Orion is the cultural festival of ISBM College of Engineering that aims at becoming a seamless medium for students of colleges, to connect and bond over like minded interests and events.

We aim to trigger the best in an individual, through innovative competitions and, lively events.



KURUKSHETRA

ISB&M celebrates its anniversary every year with Force, Zest and Attitude which symbolizes FORZA. The event is held on the 23rd & 24th of July by the students, faculty and alumni across all the three campuses of the Institute. The theme for FORZA 2022 was "**Breaking All Barriers**" and was conducted virtually due to the global pandemic.

The intense competition prevailing in all the events brings out the best in the students and shows the never say die attitude which is the dictum of the institute.

ORION



Kurukshetra is sports fest of ISBM College of Engineering, spread over three days, it provides a platform to the students to showcase and compete through various sports competitions.

FORZA



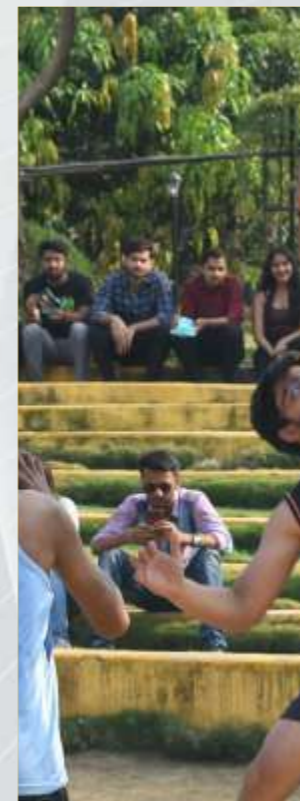
The annual cultural extravaganza of ISB&M is one of the most awaited inter-college fests. This four-day national level soiree of events. CRESCENDO is the perfect platform for young budding artists to showcase their talent. The event is attended by throngs of students from prominent colleges and B-schools across the nation. The theme for CRESCENDO '23 was "**DREAM, DARE, DELIVER**" where participants performed in events like Paintball, Aqua-dance, Fashion show, Roadies, Junkyard Wars, Jam, Singing, Rock show, LAN gaming, Mime act and many more with enthusiasm and vigor.

WELCOMES YOU TO

CRESCENDO



Life @ISBM COE



HOW TO APPLY

Applying with us is easy. As a prospective student you can apply using our **online application form**.



APPLY ONLINE:

www.isbmcoe.org/application

Complete our online application form, it will take approx. 10 minutes

Eligibility criteria for Maharashtra State Candidate and Outside Maharashtra State Candidate :



Complete our online application form : www.isbmcoe.org/application



Visit us physically with copy of your original qualification certificate



Our admission team member guide you personally about your any query regarding admission process



Complete your admission process and your **DONE !**

WELCOME To ISBM COE

First Year Admissions

Candidate should be Indian National and should have passed HSC (Std. XII) exams of Maharashtra State Board of Secondary and Higher Secondary Examination or its equivalent examination with subjects English, Physics, Mathematics Chemistry / Biotechnology / Biology / Technical educational subjects.

&

Candidate Should have secured minimum 45% marks (minimum 40% marks in case of Backward Class categories and persons with disability candidates belonging to Maharashtra state only) in the subjects Physics, Mathematics and Chemistry / Biotechnology / Biology / Technical Vocational subject added together.

OR

B.Sc. with Mathematics as one of the subjects with first class.

&

Candidate should have obtained a valid score in MH-CET 2023 or JEE MAINS 2023.

Direct Second Year Admissions

Diploma in Engineering from recognized board / university with minimum 45% marks.

Admission Process Details :

Stage 1:

Online Registration (Most Important Step)

Stage 2:

Confirmation of form at Facility Centers in person (FC'S)

Stage 3:

Display of Provisional Merit List

Stage 4:

Online option forms for CAP Rounds

Stage 5:

Allotment and confirmation of seats by paying a DD at Admission Receipt Centre

Stage 6:

Counselling Round

Please visit <http://www.dtemaharashtra.gov.in/> for further details.

CONTACT US

To apply online, complete your application at www.isbmcoe.org/application

Email :

admissionscoe@isbm.ac.in

College Address :

ISBM College of Engineering
S. No. 44/1, 44 1/ 2,
Nande Village Pashan Sus Road,
Pune 412 115

College Number :

020 - 35012011 / 2012
7410769206

Ragging

As per the directives of Hon. Supreme Court, All India Council for Technical Education (AICTE) and Govt. of Maharashtra, strict action are recommended against the concern student for indulging and abetting ragging. Whosoever directly or indirectly commits, participates in, abets or propagates ragging within or outside any educational institutional shall on conviction, be punished as per the rules.

Questions? We are on

WhatsApp

7410769206